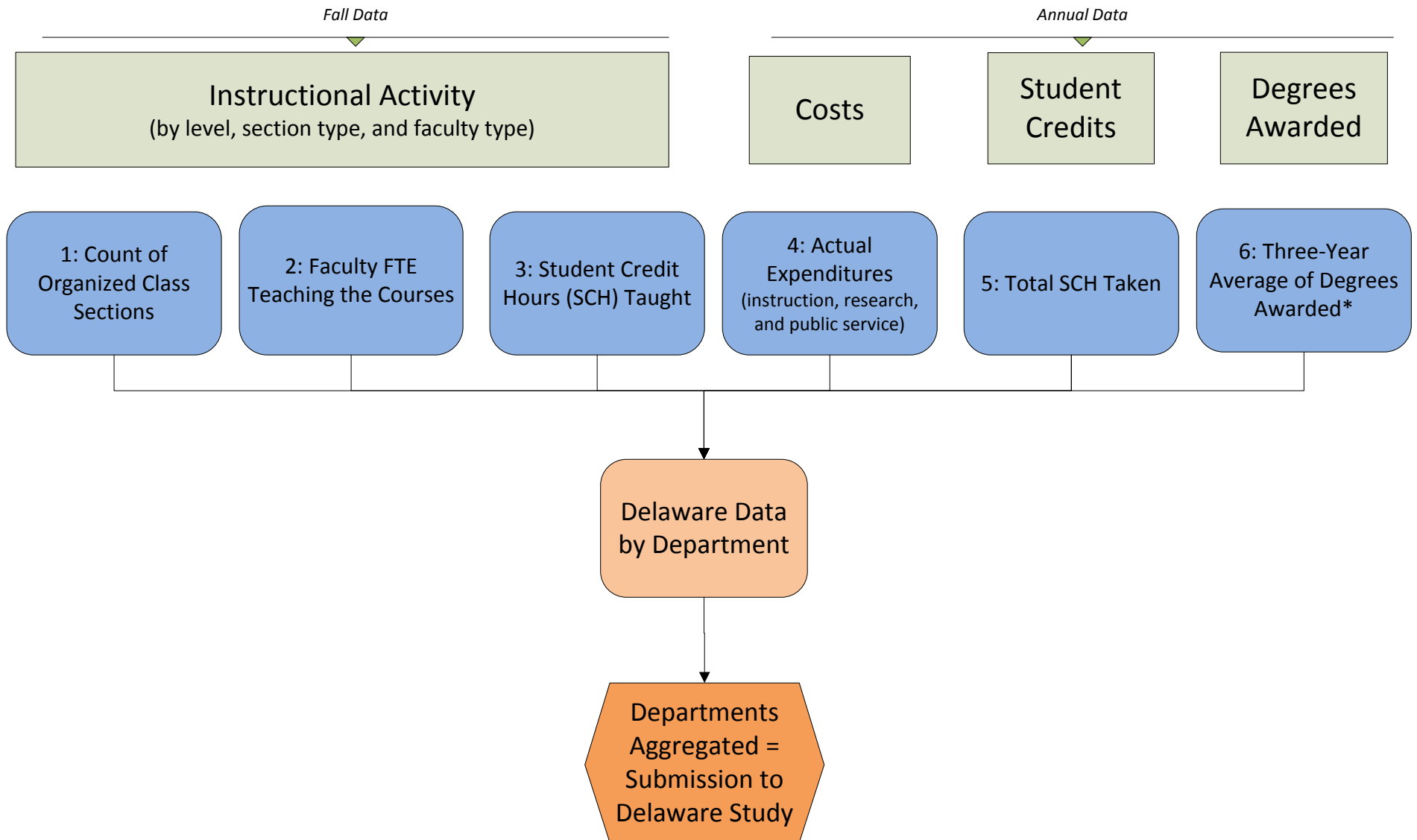


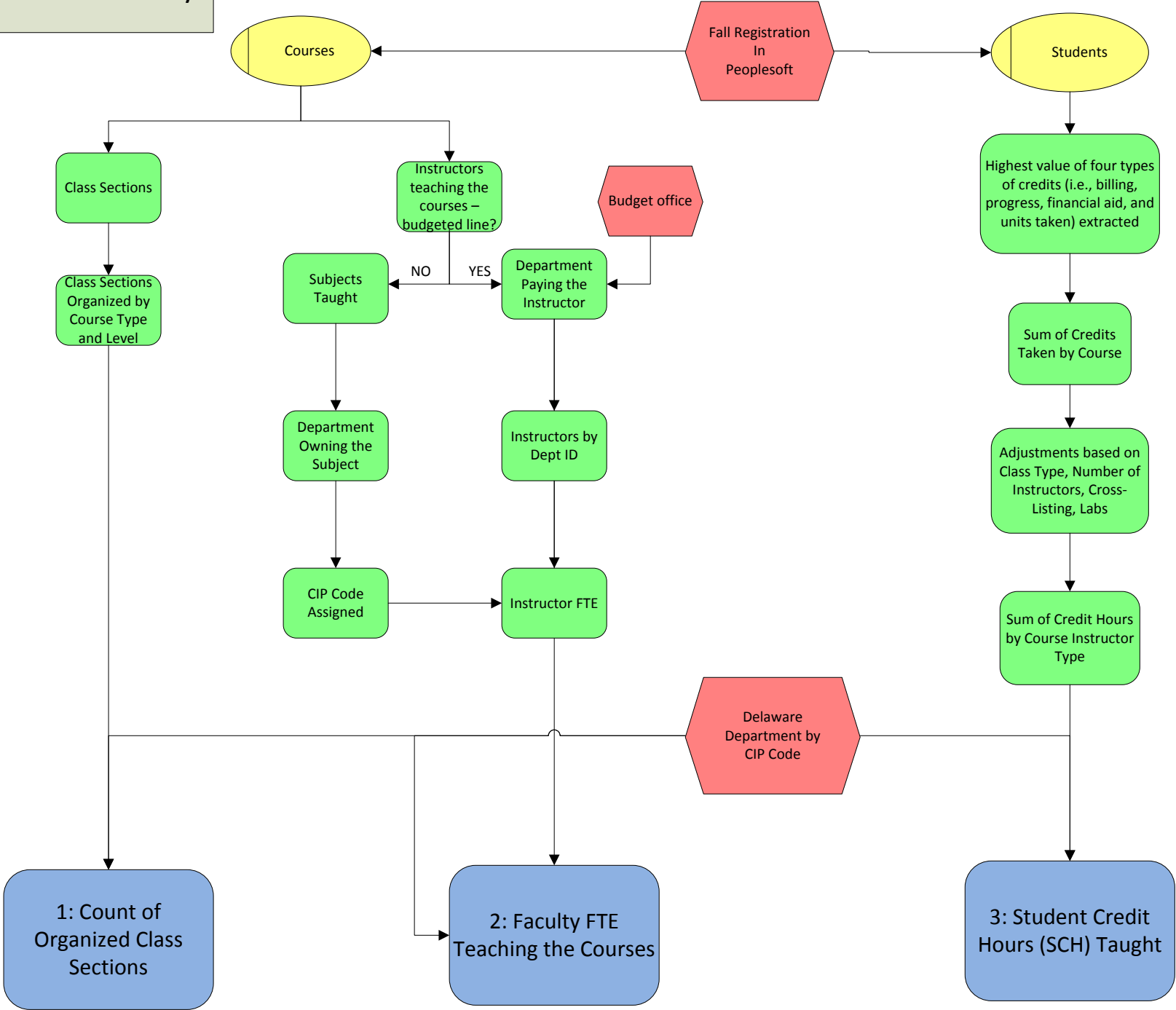
Data Submitted to Delaware Study for Each Department

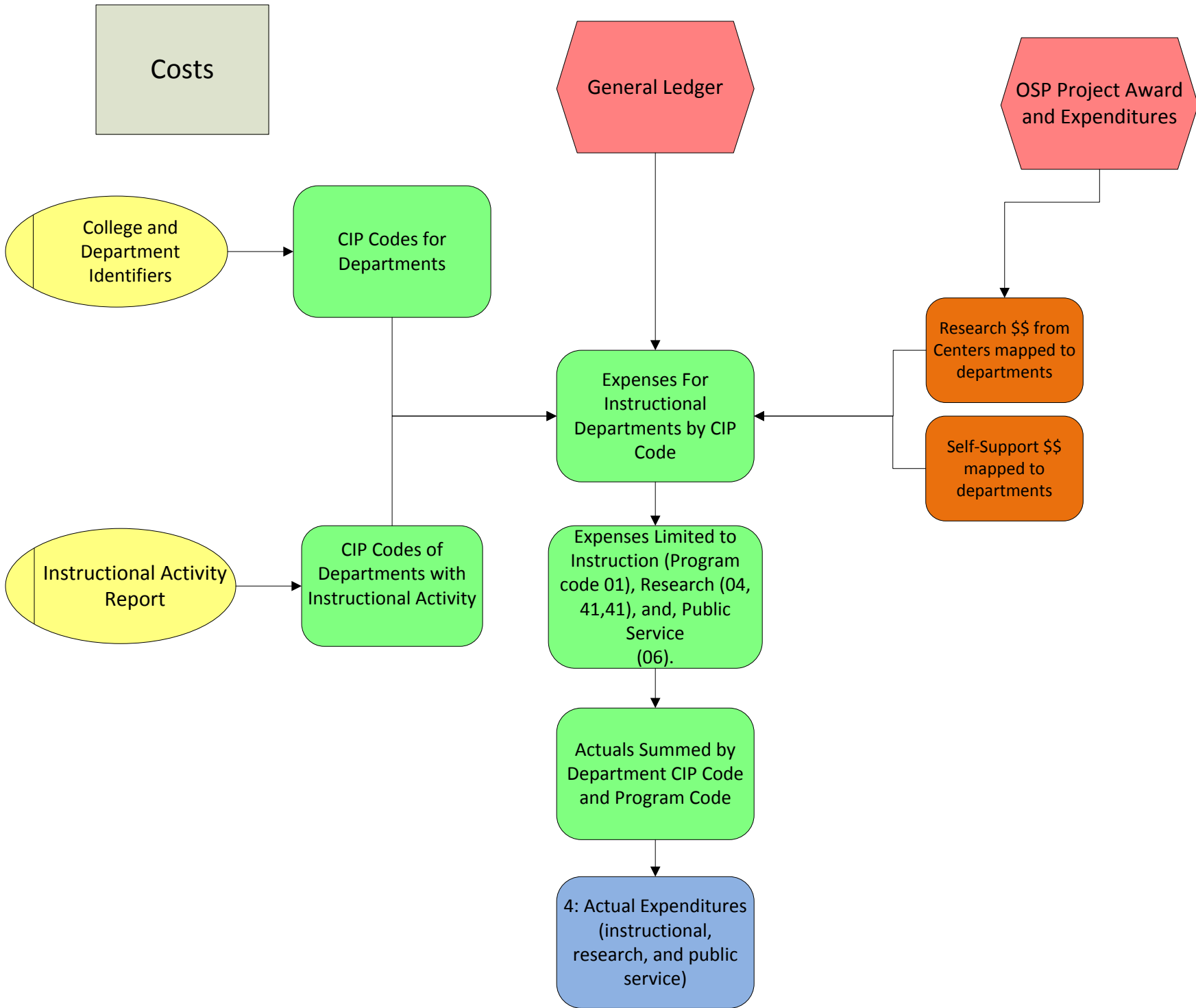
OVERVIEW: The core organizing principle of the Delaware Study is to “follow the money” -- that is, all data sources are matched based on the origin of the instructor and how they are paid. Departments are derived through a matching process between the departments of the subject being taught and the department from which the teaching faculty are paid. CIP codes are then assigned and used to tag all data attributed to that department.



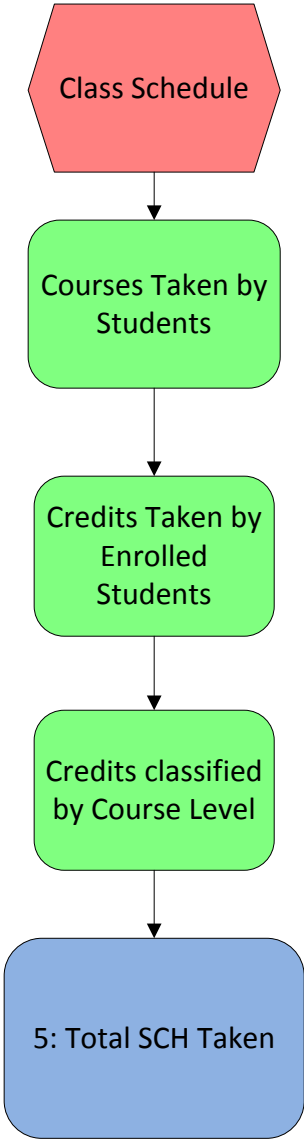
*Used by Delaware only for classification of departments and not used or available for comparative purposes.

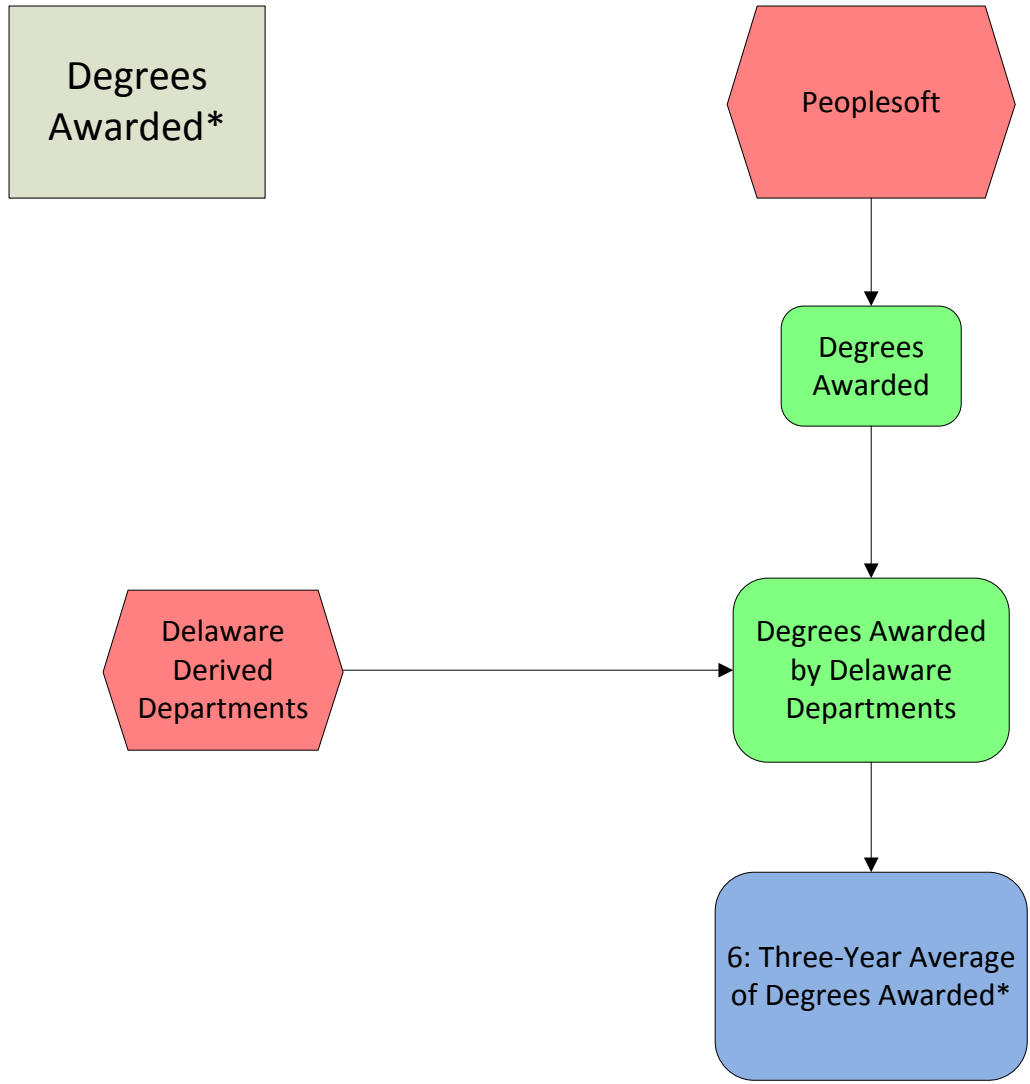
Instructional Activity





Student
Credits





Degrees Awarded*

Peoplesoft

Degrees Awarded

Delaware Derived Departments

Degrees Awarded by Delaware Departments

6: Three-Year Average of Degrees Awarded*

*Used by Delaware only for classification of departments and not used or available for comparative purposes.